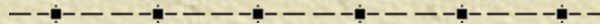


2006 Census of Agriculture

Resource Note #15

Community Social Profile Project
July 2008



Preface

- ✦ The Resource Note is intended to increase our understanding of and broaden our knowledge base on key subject areas that are fundamental in building our capacity in numeric and geographic analysis.
- ✦ It is not an in-depth or comprehensive discussion of the subject matter.
- ✦ It highlights certain relevant and important areas that deserve our attention and consideration.
- ✦ It can also serve as a “how-to” guide with instructions to perform certain task
- ✦ It is intended to be informal and informative.

Introduction

✦ This is the 15th Resource Note, previous notes include:

1	Census Geography	11	Community Social Profile Template (part 1)
2	Census Data	12	Some quick ways to access census data
3	PCensus Database	13	Community Social Profile Template (part 2)
4	Geocoding	14	Mapping Migration and Commuting data
5	Cartographic Principles		
6	Thematic Mapping		
7	2006 Census		
8	Population Pyramid		
9	PCensus DBX v8.5		
10	GIS Data and File Management		

Introduction

- ✦ This resource note describes the data products available from the 2006 Census of Agriculture
- ✦ The census provides comprehensive information about agricultural operations across the nation and the people managing those farms
- ✦ The service areas of many Social Planning Councils in Ontario have a rural component. The data collected by the 2006 Census of Agriculture can complement the Community Social Profile being developed as part of the Ontario Social Landscape Project funded by the Ontario Trillium Foundation
- ✦ The Census of Agriculture is conducted every five years coincide with the Census of Population

Introduction

- ✦ Data from the Census of Agriculture are not available from PCensus database, they have to be obtained from Statistics Canada
- ✦ Four types of data products are available, both the farm data/farm operator data and the Agriculture Community Profile are at the CSD, CCS and CD levels
- ✦ Selected historical data and Agriculture-Population linkage data are available at the provincial and national level

Data products

Data products

Description	Geography level	Release date
Farm data and farm operator data: All farm and farm operator variables for 2006 and 2001 to the census division level. For the census consolidated subdivisions, only the data for 2006 will be published.	Canada, province, territory, census agricultural region, census division and census consolidated subdivision	May 16, 2007
2006 Agriculture community profiles: All farm and farm operator variables for 2006 (accessible by individual community name) to the census consolidated subdivisions level plus selected Census of Population variables. The selected community and its related census consolidated subdivision, census division, census agricultural region and province are all displayed on maps.	Canada, province, census agricultural region, census division and census consolidated subdivision	February 5, 2008
Selected historical data from the Census of Agriculture: Selected historical farm and operator data.	Canada and province	December 11, 2007
Agriculture–Population linkage data: Selected 2006 and historical data on socio-economic characteristics of farm operators, data on the farm population, and income profiles of census farm families and households.	Canada and province	December 2, 2008

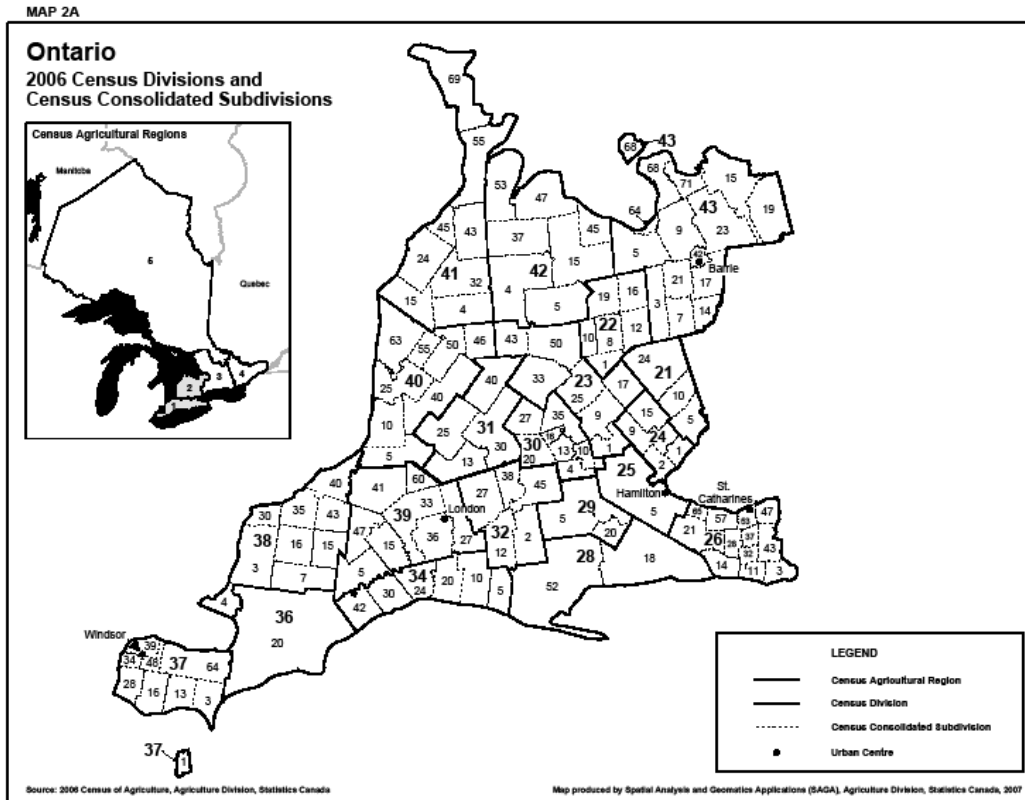
Farm Geography

- ✦ The agricultural data are available at the following level of geography:
 - Census Subdivision (CSD)
 - Census Consolidated Subdivision (CCS)
 - Census Division (CD)
 - Census Agricultural Region (CAR)
 - Province
 - Canada
- ✦ For inclusion in the Community Social Profile, data at the CSD, CCS and CD are most likely to be used
- ✦ The following maps show the boundaries of the Census Consolidated Subdivisions (CCS)

Census Consolidated Subdivisions - CCS

- ✦ A census consolidated subdivision is a grouping of adjacent census subdivisions
- ✦ Generally, the smaller, more urban census subdivisions (e.g., towns, villages) are combined with the surrounding, larger, more rural census subdivision to create a geographic level between the census subdivision and the census division
- ✦ A census subdivision with a land area greater than 25 square kilometres can form a census consolidated subdivision of its own. Also, a census subdivision with a population greater than 100,000 (according to the last census) usually forms a census consolidated subdivision of its own
- ✦ The name of the census consolidated subdivision usually coincides with its largest census subdivision component in terms of land area.

Census Consolidated Subdivisions



CCS cont'd

Ontario

2006 Census Divisions and Census Consolidated Subdivisions

21 Peel 5 Mississauga 10 Brampton 24 Caledon	25 Hamilton 5 Hamilton	30 Waterloo* 4 North Dumfries 10 Cambridge 13 Kitchener 16 Waterloo 20 Wilmot 27 Wellesley 35 Woolwich	36 Chatham-Kent 20 Chatham-Kent
22 Dufferin 1 East Garafraxa 8 Amaranth 10 East Luther Grand Valley 12 Mono 16 Mulmur 19 Melancthon	26 Niagara 3 Fort Erie 11 Port Colborne 14 Wainfleet 21 West Lincoln 28 Pelham 32 Welland 37 Thorold 43 Niagara Falls 47 Niagara-on-the-Lake 53 St. Catharines 57 Lincoln 65 Grimsby	31 Perth 13 Perth South 25 West Perth 30 Perth East 40 North Perth	37 Essex* 1 Pelee 3 Leamington 13 Kingsville 16 Essex 28 Amherstburg 34 LaSalle 39 Windsor 48 Tecumseh 64 Lakeshore
23 Wellington 1 Puslinch 9 Guelph/Eramosa 17 Erin 25 Centre Wellington 33 Mapleton 43 Minto 50 Wellington North	28 Haldimand-Norfolk 18 Haldimand County 52 Norfolk County	32 Oxford 2 Norwich 12 South-West Oxford 27 Zorra 38 East Zorra-Tavistock 45 Blandford-Blenheim	38 Lambton 3 St. Clair 4 <i>Walpole Island 46</i> 7 Dawn-Euphemia 15 Brooke-Alvinston 16 Enniskillen 30 Sarnia 35 Plympton-Wyoming 40 Lambton Shores 43 Warwick
24 Halton 1 Oakville 2 Burlington 9 Milton 15 Halton Hills	29 Brant* 5 Brant 20 Six Nations (Part) 40	34 Elgin 5 Bayham 10 Malahide 20 Central Elgin 24 Southwold 30 Dutton/Dunwich 42 West Elgin	

* To protect data confidentiality, the data for some or all geographic areas in this Census Division have been combined with another Census Consolidated Subdivision or Census Division. For more detail, see the Geographic area amalgamations page accessible from the Reference maps page.

All Census Consolidated Subdivisions in *italics* had no farms in 2006.

Map 2A

Page 1

CCS Cont'd

Ontario

2006 Census Divisions and Census Consolidated Subdivisions

Map 2A

Page 2

39 Middlesex

5 Southwest Middlesex
15 Strathroy-Caradoc
27 Thames Centre
33 Middlesex Centre
36 London
41 North Middlesex
47 Adelaide Metcalfe
60 Lucan Biddulph

40 Huron

5 South Huron
10 Bluewater
25 Central Huron
40 Huron East
46 Howick
50 Morris-Turnberry
55 North Huron
63 Ashfield-Colborne-
Wawanosh

41 Bruce

4 South Bruce
15 Huron-Kinloss
24 Kincardine
32 Brockton
43 Arran-Elderslie
45 Saugeen Shores
55 South Bruce Peninsula
69 Northern Bruce Peninsula

42 Grey

4 West Grey
5 Southgate
15 Grey Highlands
37 Chatsworth
45 Blue Mountains
47 Meaford
53 Georgian Bluffs

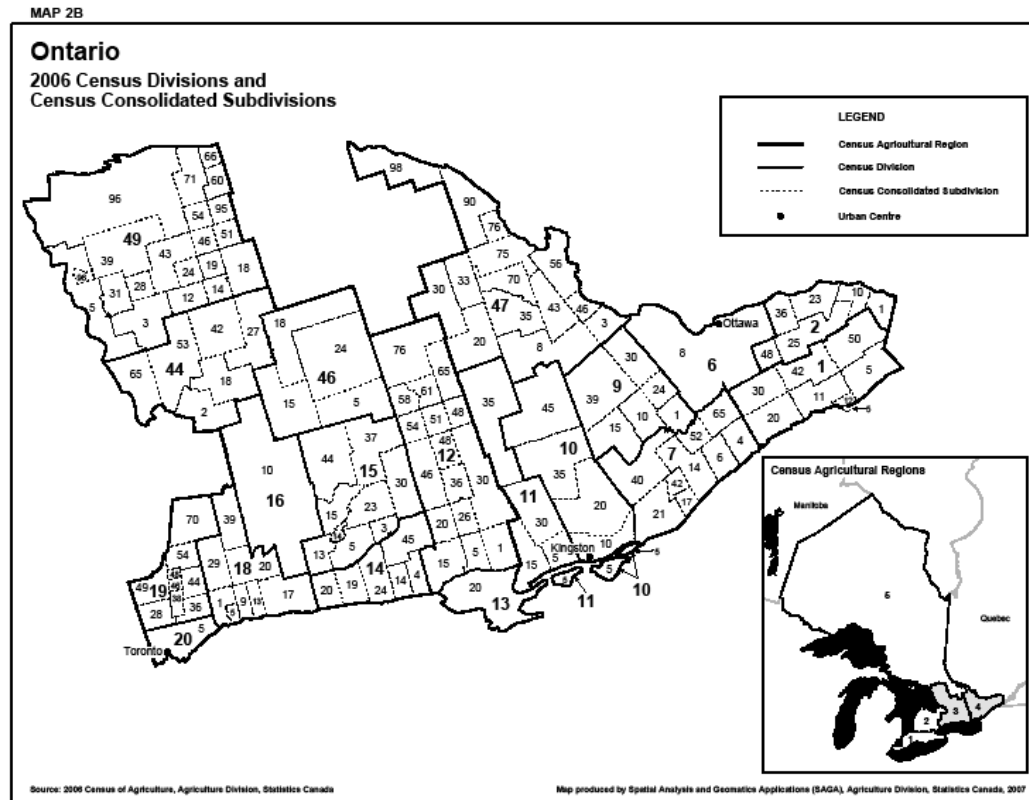
43 Simcoe*

3 Adjala-Tosorontio
5 Clearview
7 New Tecumseth
9 Springwater
14 Bradford West Gwillimbury
15 Severn
17 Innisfil
19 Ramara
21 Essa
23 Oro-Medonte
42 Barrie
64 Wasaga Beach
68 Tiny
71 Tay

* To protect data confidentiality, the data for some or all geographic areas in this Census Division have been combined with another Census Consolidated Subdivision or Census Division. For more detail, see the Geographic area amalgamations page accessible from the Reference maps page.

All Census Consolidated Subdivisions in Italics had no farms in 2006.

CCS Cont'd



CCS Cont'd

Ontario

2006 Census Divisions and Census Consolidated Subdivisions

<p>1 Stormont, Dundas and Glengarry*</p> <ul style="list-style-type: none"> 5 South Glengarry 11 South Stormont 12 Cornwall 20 South Dundas 30 North Dundas 42 North Stormont 50 North Glengarry <p>2 Prescott and Russell</p> <ul style="list-style-type: none"> 1 East Hawkesbury 10 Champlain 23 Alfred and Plantagenet 25 The Nation 38 Clarence-Rockland 48 Russell <p>6 Ottawa</p> <ul style="list-style-type: none"> 8 Ottawa 	<p>7 Leeds and Grenville</p> <ul style="list-style-type: none"> 4 Edwardsburgh/Cardinal 6 Augusta 14 Elizabethtown-Kitley 17 Front of Yonge 21 Leeds and the Thousand Islands 40 Rideau Lakes 42 Athens 52 Memickville-Wolford 65 North Grenville <p>9 Lanark</p> <ul style="list-style-type: none"> 1 Montague 10 Drummond/North Elmsley 15 Tay Valley 24 Beckwith 30 Mississippi Mills 39 Lanark Highlands <p>10 Frontenac*</p> <ul style="list-style-type: none"> 5 Frontenac Islands 10 Kingston 20 South Frontenac 35 Central Frontenac 45 North Frontenac 	<p>11 Lennox and Addington</p> <ul style="list-style-type: none"> 5 Loyalist 15 Greater Napanee 30 Stone Mills 35 Addington Highlands <p>12 Hastings*</p> <ul style="list-style-type: none"> 1 Tyendinaga 5 Belleville 15 Quinte West 20 Stirling-Rawdon 25 Centre Hastings 30 Tweed 36 Madoc 46 Marmora and Lake 48 Tudor and Cashel 51 Limerick 54 Wollaston 58 Faraday 61 Bancroft 65 Carlow/Mayo 76 Hastings Highlands <p>13 Prince Edward</p> <ul style="list-style-type: none"> 20 Prince Edward 	<p>14 Northumberland</p> <ul style="list-style-type: none"> 4 Brighton 14 Cramahe 19 Hamilton 20 Port Hope 24 Alnwick/Haldimand 45 Trent Hills <p>15 Peterborough*</p> <ul style="list-style-type: none"> 3 Asphodel-Norwood 5 Otonabee-South Monaghan 13 Cavan-Millbrook-North Monaghan 14 Peterborough 15 Smith-Ennismore-Lakefield 23 Douro-Dummer 30 Havelock-Belmont-Methuen 37 North Kawartha 44 Galway-Cavendish and Harvey <p>16 Kawartha Lakes</p> <ul style="list-style-type: none"> 10 Kawartha Lakes
---	--	---	---

Map 2B

Page 1

* To protect data confidentiality, the data for some or all geographic areas in this Census Division have been combined with another Census Consolidated Subdivision or Census Division. For more detail, see the Geographic area amalgamations page accessible from the Reference maps page.

All Census Consolidated Subdivisions in *italics* had no farms in 2006.

CCS Cont'd

Ontario

2006 Census Divisions and Census Consolidated Subdivisions

18 Durham*

1 Pickering
5 Ajax
9 Whitby
13 Oshawa
17 Clarington
20 Sougou
29 Uxbridge
39 Brock

19 York*

28 Vaughan
36 Markham
38 Richmond Hill
44 Whitchurch-Stouffville
46 Aurora
48 Newmarket
49 King
54 East Gwillimbury
70 Georgina

20 Toronto

5 Toronto

44 Muskoka*

2 Gravenhurst
18 Bracebridge
27 Lake of Bays
42 Huntsville
53 Muskoka Lakes
65 Georgian Bay

46 Haliburton*

5 Highlands East
15 Minden Hills
18 Algonquin Highlands
24 Dysart and Others

47 Renfrew*

3 McNab/Braeside
8 Greater Madawaska
20 Brudenell, Lyndoch
and Raglan
30 Madawaska Valley
33 Killaloe, Hagarty
and Richards
35 Bonnechere Valley
43 Admaston/Bromley
46 Horton
56 Whitewater Region
70 North Algona Wilberforce
75 Laurentian Valley
76 Petawawa
90 Laurentian Hills
98 Head, Clara and Maria

Map 2B

Page 2

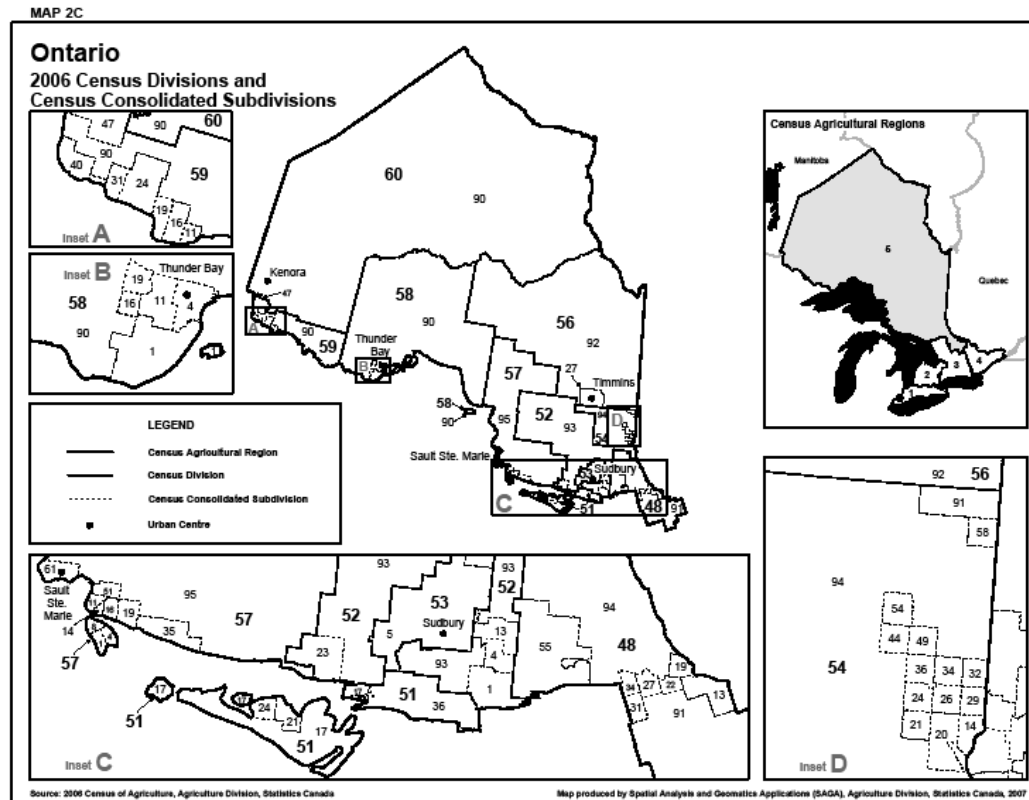
49 Parry Sound*

3 Seguin
5 The Archipelago
12 McMurrich/Monteith
14 Perry
18 Keamey
19 Armour
24 Ryerson
28 McKellar
31 McDougall
39 Whitestone
43 Magnetawan
46 Strong
51 Joly
54 Machar
60 Powassan
66 Callander
71 Nipissing
95 Parry Sound, Unorganized,
North East Part
96 Parry Sound, Unorganized,
Centre Part

* To protect data confidentiality, the data for some or all geographic areas in this Census Division have been combined with another Census Consolidated Subdivision or Census Division. For more detail, see the Geographic area amalgamations page accessible from the Reference maps page.

All Census Consolidated Subdivisions in *italics* had no farms in 2006.

CCS Cont'd



CCS Cont'd

Ontario

2006 Census Divisions and Census Consolidated Subdivisions

48 Nipissing*

- 13 Papineau-Cameron
- 19 Mattawan
- 22 Calvin
- 27 Bonfield
- 31 Chisholm
- 34 East Ferris
- 55 West Nipissing
- 91 Nipissing, Unorganized, South Part
- 94 Nipissing, Unorganized, North Part

51 Manitoulin*

- 17 Northeastern Manitoulin and the Islands
- 21 Billings
- 24 Gordon
- 36 Killarney

52 Sudbury*

- 1 French River
- 4 St-Charles
- 13 Markstay-Warren
- 23 Sables-Spanish Rivers
- 93 Sudbury, Unorganized, North Part

53 Greater Sudbury

- 5 Greater Sudbury

54 Timiskaming

- 14 Harris
- 20 Temiskaming Shores
- 21 Hudson
- 24 Kerns
- 28 Harley
- 29 Casey
- 32 Brethour
- 34 Hilliard
- 38 Armstrong
- 44 Charlton and Dack
- 49 Evanturel
- 54 Chamberlain
- 58 McGarry
- 91 *Timiskaming, Unorganized, East Part*
- 94 Timiskaming, Unorganized, West Part

56 Cochrane

- 27 Timmins
- 92 Cochrane, Unorganized, North Part

57 Algoma*

- 1 Jocelyn
- 4 Hilton
- 8 St. Joseph
- 11 Laird
- 14 Tarbutt and Tarbutt Additional
- 16 Johnson
- 19 Plummer Additional
- 35 Huron Shores
- 51 Macdonald, Meredith and Aberdeen Additional
- 61 Sault Ste. Marie
- 95 Algoma, Unorganized, North Part

58 Thunder Bay*

- 1 Neebing
- 4 Thunder Bay
- 11 Oliver Paipoonge
- 16 O'Connor
- 19 Conmee
- 90 Thunder Bay, Unorganized

59 Rainy River*

- 11 Alberton
- 16 La Vallee
- 19 Emo
- 24 Chapple
- 31 Morley
- 40 Dawson
- 47 Lake of the Woods
- 90 Rainy River, Unorganized

60 Kenora

- 90 Kenora, Unorganized

Map 2C

* To protect data confidentiality, the data for some or all geographic areas in this Census Division have been combined with another Census Consolidated Subdivision or Census Division. For more detail, see the Geographic areas amalgamations page accessible from the Reference maps page.

All Census Consolidated Subdivisions in italics had no farms in 2006.

Farm and Farm Operator Data

✦ Data available for the following categories:

- Farm (by industry groups, farm area, land use...)
- Land (tenure, soil conservation practices...)
- Crop (hay, fruits, greenhouse....)
- Livestock (cattle, bees, poultry....)
- Farm business (capital, computer application...)
- Farm operator (age, sex, average hour of work...)

✦ Available for 2001 and 2006 censuses online

Farm and Farm Operator Data

- ✧ The tables are grouped according to the following sections:
- ✧ **Farm data tables, Canada, provinces and territories**
- ✧ Agriculture overview, Canada and the provinces
- ✧ Farms in the territories
- ✧ **Farm data tables, Canada, provinces, Census Agricultural Regions (CAR), Census Divisions (CD) and Census Consolidated Subdivisions (CCS)**
- ✧ Farm type
- ✧ Land use, tenure and land management practices (tillage, inputs, manure, irrigation, organic, soil conservation)
- ✧ Crops (hay, field crops, vegetables, fruits, berries, nuts, nursery, sod, Christmas trees, greenhouse, mushrooms and maple)
- ✧ Livestock, poultry and bees
- ✧ Farm business characteristics (operating arrangements, computer use, farm capital, farm machinery, gross farm receipts, operating expenses, paid agricultural work, injuries on farm)
- ✧ **Farm operator tables, Canada, provinces, Census Agricultural Regions (CAR), Census Divisions (CD) and Census Consolidated Subdivisions (CCS)**
- ✧ Characteristics of farm operators (number of operators, age, sex, living on or off the farm, working on or off the farm)
- ✧ **Farm operator table, territories**
- ✧ Characteristics of farm operators for the territories

Agriculture Community Profile

- ✦ All farm and farm operator variables accessible by community name (CSD, CCS or CD)
- ✦ Available for both 2001 and 2006 online free of charge

Agriculture Community Profile - 2006

✦ Access 2006 Census of Agriculture home page

✦ http://www26.statcan.ca:8080/AgrProfiles/cp06/PlaceSearch.action?request_locale=en

✦ Enter place name

2006 Agriculture Community Profiles

These profiles present community-level information from the 2006 Census of Agriculture. Users can search for an area of interest by typing its "place name" in the box below or by clicking on a province from the list below and selecting the area from a list.

These profiles include agricultural statistics on population and farm operators, land use and land practices, farm finances, crops and horticulture and livestock for most communities at the geographic level of the census consolidated subdivision (CCS), census division (CD), census agricultural region (CAR), province and Canada.

There are no agricultural profiles available for the territories due to confidentiality constraints.

Type the 'place name' to search for in the box below

Begins with Contains

Place name: search

Province: ▼

Or select from a list

[Newfoundland and Labrador](#) | [Prince Edward Island](#) | [Nova Scotia](#) | [New Brunswick](#) | [Quebec](#) | [Ontario](#) | [Manitoba](#) | [Saskatchewan](#) | [Alberta](#) | [British Columbia](#)

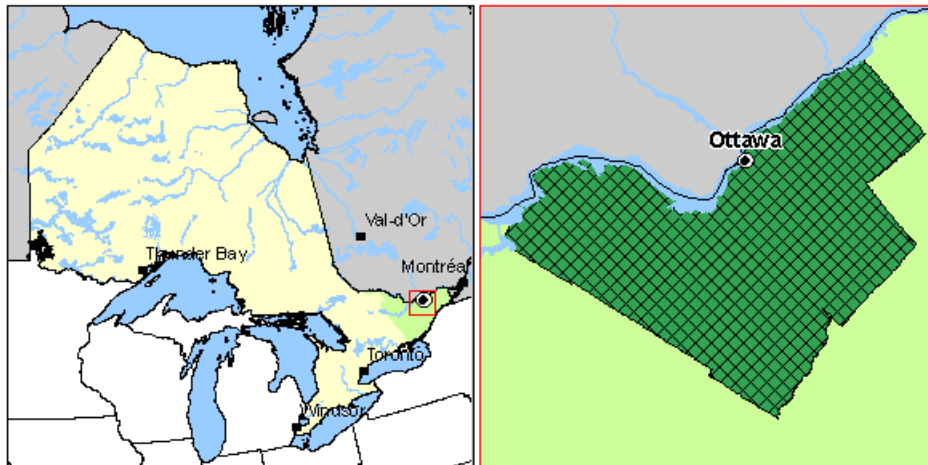
Ottawa -2006

[New search](#) > [Search results for "ottawa"](#)

Selected variables

Table 1
Quick agriculture profile for:

- Ottawa
- Ottawa (CCS)
- Ottawa (CD)
- Eastern Ontario Region (CAR)
- Ontario (PR)



Ottawa -2006

	Ottawa (CCS 350406008)	Ottawa (CD 350406)	Eastern Ontario Region (CAR 3504)	Ontario (PR 35)	Canada
Farm and farm operator statistics					
Total population in 2006 ¹	812,129	812,129	1,447,655	12,160,282	31,511,587
Total number of operators	1,840	1,845	13,005	82,410	327,060
Average age of operators	54.7	54.7	53.3	52.6	52.0
Total male operators	1,330	1,325	9,245	58,875	236,220
Total female operators	520	515	3,760	23,530	90,840
Total number of farms	1,267	1,267	8,864	57,211	229,373
Land statistics					
Land area (km ²) ¹	2,778	2,778	28,268	907,574	5,469,898
Total area of farms (hectares)	114,674	114,674	973,568	5,386,453	67,586,739
Average area of farms (hectares)	91	91	110	94	295
Farm finance statistics					
Total gross farm receipts (excluding forest products sold) (dollars)	164,692,496	164,692,496	999,920,834	10,342,031,229	42,191,981,171

Agriculture Community Profile - 2001

- ✦ Access 2001 Census of Agriculture home page
- ✦ <http://www25.statcan.ca:8081/AgrProfile/acphome.jsp>
- ✦ Enter place name

2001 Agriculture Community Profiles

The 2001 Agriculture Community Profiles provide free information from Statistics Canada's 2001 Census of Agriculture data.

The profiles include agricultural statistics on population and farm operators, land use and land practices, farm finances, crops and horticulture, and livestock for most communities at the geographic level of the [census division \(CD\)](#) and [census agricultural region \(CAR\)](#).

Enter the name of your community or place of interest:

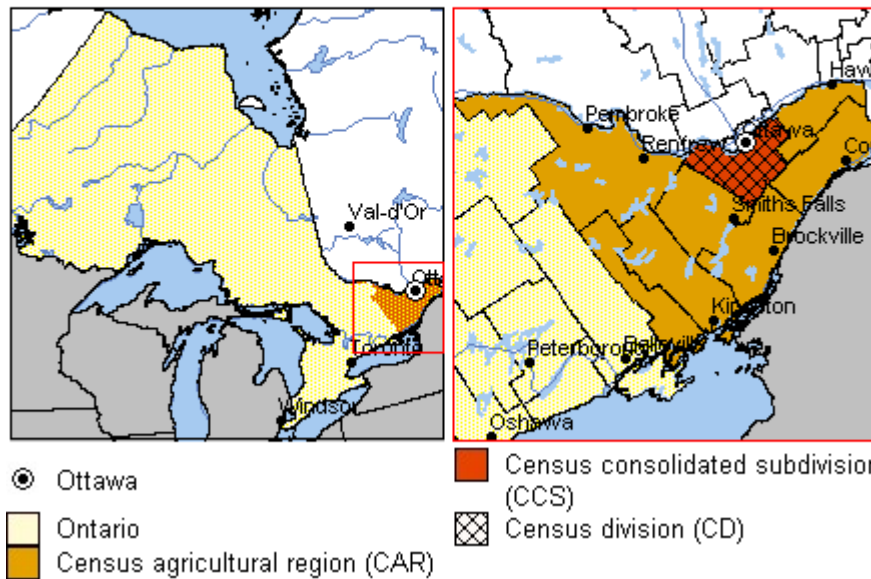
Place name	Provinces*
<input type="text"/>	Canada
<input checked="" type="radio"/> begins with	<input type="radio"/> contains

[94F0047XIE](#)

Ottawa - 2001

Ottawa, Ontario

Ottawa (CCS 3506008)
Ottawa Division (CD 3506)
Eastern (CAR 3504)



Ottawa - 2001

	Ottawa Division (CD 3506)	Ottawa (CCS 3506008)
<u>Farm and farm operator statistics</u>		
Total population in 2001 ⁽¹⁾	774,072	774,072
Total population in 1996 ⁽²⁾	721,136	721,136 ^A
1996 to 2001 population change (%)	7.3	7.3
Total number of operators	1,855	1,855
Average age of operators	52.1	52.1
Total number of farms	1,318	1,318
<u>Land use and land practices statistics</u>		
Land area (km ²)	2,779	2,779
Total area of farms (hectares)	120,452	120,452
<u>Farm finance statistics</u>		
Total gross farm receipts (excluding forest products sold) (\$)	151,877,673	151,877,673
Total farm capital (market value \$)	1,004,782,672	1,004,782,672
<u>Crop and horticulture statistics</u>		
Land in crops (hectares) (excluding Christmas tree area)	80,254	
<i>Top five crops (hectares)</i>		
1. Corn for grain	21,587	
2. Alfalfa and alfalfa mixtures	17,840	
3. Soybeans	13,024	
4. All other tame hay and fodder crops	11,653	
5. Corn for silage	3,608	

Agriculture – Population Linkage

- ✦ Statistics Canada will release profile on the farm population by linking the information provided on the Census of population long-form questionnaires
- ✦ It allows farm population to be compared with the general population characteristics such as marital status, level of schooling, unpaid work and total household income at the **provincial and national level**
- ✦ Expected release date: December 2, 2008

Agriculture-population linkage 2001

✿ Table 19 - Farm operators and labour force by country of birth for Ontario, 2001

	Operators	Labour force
Total number of persons	85,020	6,086,815
Canada	72,370	4,261,225
Austria	160	5,655
Belgium	420	4,575
China, People's Republic of³	45	86,305
Denmark	105	3,435
Finland	30	3,870
France	55	8,395
Germany⁴	1,225	44,855
Hungary	210	13,055
India	80	117,970
Italy	530	96,060
Mexico	170	13,085
Netherlands	4,315	33,255
Paraguay⁵	5	510
Poland	235	71,545
Portugal	335	70,755
Republic of Ireland, Eire	110	8,915
Romania	50	21,235
Russian Federation⁶	50	21,640
Sweden	15	2,015
Switzerland	770	4,705
Ukraine⁶	45	13,245
United Kingdom	1,570	194,730

Agriculture-population linkage 2001



Table 5 - Farm operators by sex and selected variables, Ontario, 2001

	Total	Male	Female
Total number of farm operators¹	85,020	62,015	23,005
Age - Under 35 years²	9,165	6,585	2,580
Age - 35 to 54 years²	43,905	30,910	12,995
Age - 55 years and over²	31,950	24,520	7,435
Marital status - Never married (single)	6,320	5,550	770
Marital status - Married (including common law)³	73,180	52,830	20,355
Marital status - Separated	1,080	885	200
Marital status - Divorced	1,980	1,605	370
Marital status - Widowed	2,455	1,145	1,315
Mother tongue - English	67,670	49,635	18,035
Mother tongue - French	3,105	2,125	975
Mother tongue - German	4,990	3,680	1,305
Mother tongue - Ukrainian	220	140	80
Mother tongue - Dutch	4,800	3,380	1,425
Mother tongue - All others	4,240	3,055	1,185
Highest level of schooling - Less than Grade 9	11,585	9,700	1,885
Highest level of schooling - Grades 9 to 13	38,005	27,660	10,350
Highest level of schooling - Postsecondary, non-university⁴	24,635	17,255	7,380
Highest level of schooling - University	10,795	7,400	3,385
Occupation - Farmers/Farm managers	40,100	32,130	7,970
Occupation - Other agricultural occupations	7,740	5,150	2,590
Occupation - Non-agricultural occupations	37,180	24,735	12,445
Class of worker - Working for wages, salary, tips or commission	35,915	24,050	11,870
Class of worker - Self-employed without paid help	33,180	25,765	7,420
Class of worker - Self-employed with paid help	15,705	12,075	3,635

Any questions or comments?

Please contact me at:

Richard Lau

GIS Project Coordinator

Community Social Profile Project

Email: richard.lau@spno.ca

Phone: 905-632-1975, 878-0955

Fax: 905-632-0778

Thank You

This project is funded by the Ontario
Trillium Foundation

